



MINI STORAGE BUILDINGS



(866) 730-9865 | www.americansteelinc.com

\$3,440.00

(14 Gauge) 10' W x 8' L x 7' H
*Pricing for Standard roof

6' x 6' Roll Up
Roll Up Door included

Standard Roof
Roof style
(Roof length 1' longer than frame)

7' Height
Leg height

Wood Floor
Limited 30 day Warranty

Width

Length

Kit includes

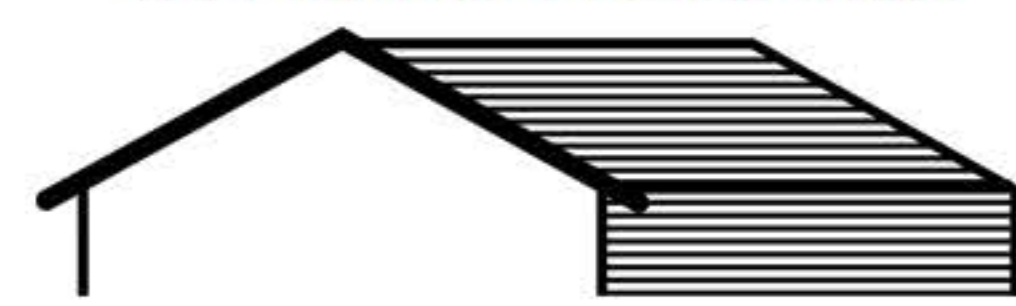
- Roof style chosen
- 2 Sides
- 2 Ends
- (1) 6' W x 6' H Roll Up Door
- Wood Floor (3/4" pressure treated plywood)

Note ANY DIMENSIONS OTHER THAN THE ONES STATED ARE CONSIDERED CUSTOM MINI STORAGE UNITS AND WILL BE PRICED ACCORDINGLY.

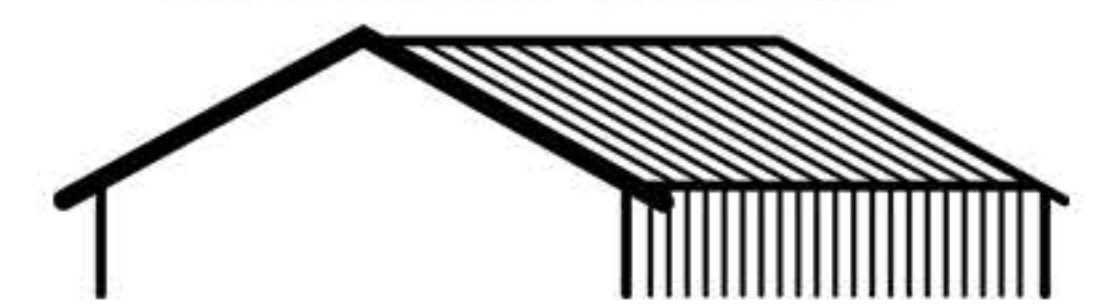
Mini Storage Pricing



All Horizontal



All Horizontal



All Vertical

Size	Standard Price	A-Frame Horizontal Price	A-Frame Vertical Price
10' W x 8' L x 7' H	\$3,440	\$3,585	\$4,160
10' W x 12' L x 7' H	\$3,740	\$3,885	\$4,605
10' W x 16' L x 7' H	\$4,045	\$4,335	\$5,200
12' W x 12' L x 7' H	\$4,425	\$4,710	\$5,575
12' W x 16' L x 7' H	\$4,935	\$5,220	\$6,085

1 YR

WORKMANSHIP WARRANTY

AMERICAN STEEL CARPORTS, INC.
Versatile. Strong. Built to last.

TX SHOP / HQ Joshua, TX 76058 | **NM SHOP** Gallup, NM 87301 | **IN SHOP** Mount Summit, IN 47361 | **PA SHOP** Wilkes-Barre, PA 18702 | **IL SHOP** Kewanee, IL 61443



FIND US ONLINE! [FACEBOOK.COM /AMERICANSTEELCARPORTS](https://www.facebook.com/AMERICANSTEELCARPORTS) | [INSTAGRAM.COM /AMERICANSTEELINC](https://www.instagram.com/AMERICANSTEELINC) | [TWITTER.COM /AMERICANCARPORT](https://www.twitter.com/AMERICANCARPORT)

FINANCING AVAILABLE!

DELIVERY & INSTALLATION INCLUDED (*1)

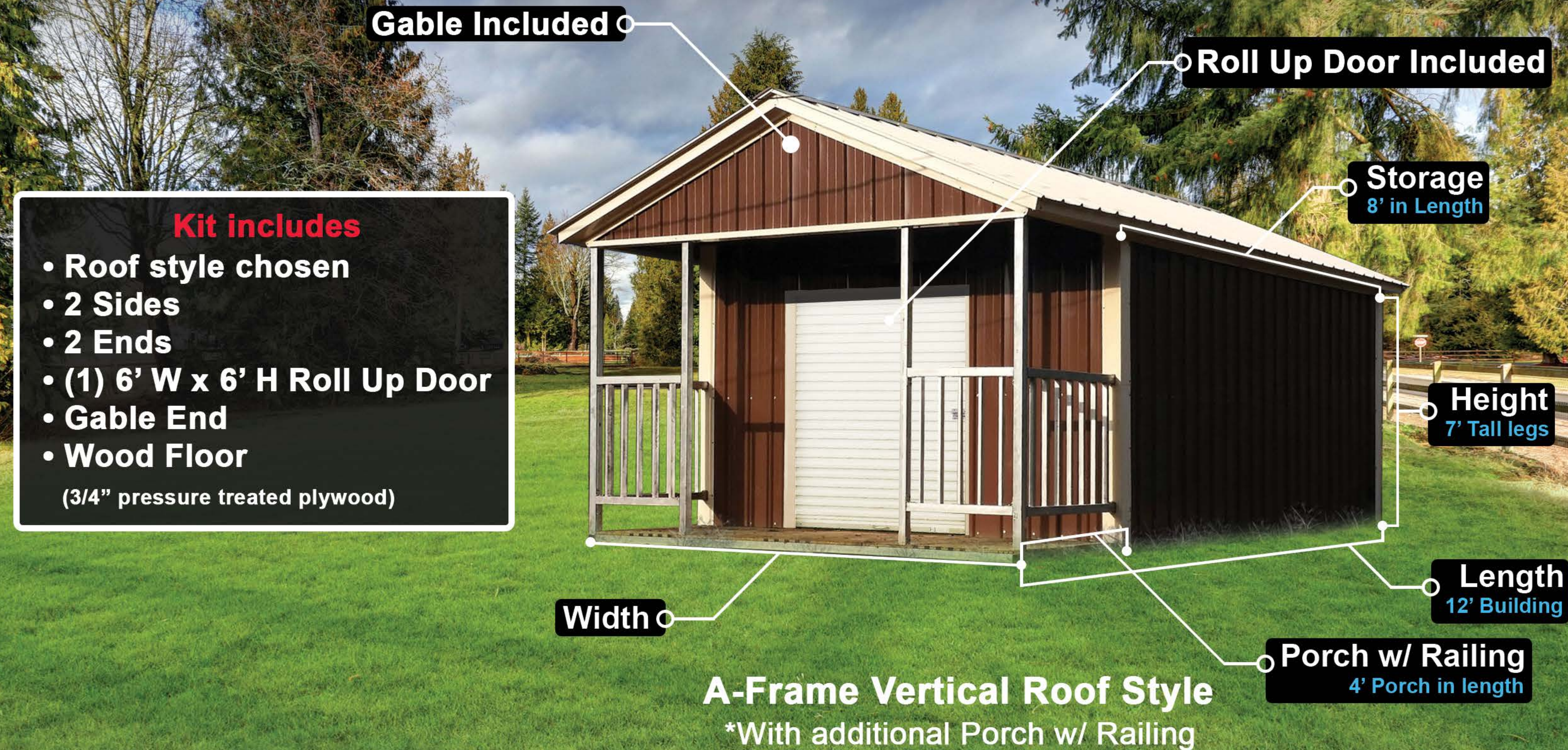
All Mini Storages are available in 14 Gauge steel framing only. Prices subject to change without notice. Check before purchase to make sure building meets your LOCAL codes. (*1) Delivery and Installation included on flat and leveled land (no slope). Units installed on unlevelled ground will have spacing between base rail and ground. ASCI is not responsible for any spacing being filled, or ground work being done. If extra work is needed due to ground being unlevelled more than 3" extra charge will incur.



www.americansteelinc.com | (866) 730-9865
 We offer the best quality buildings in the carport industry.



MINI STORAGE WITH PORCH



- Kit includes**
- Roof style chosen
 - 2 Sides
 - 2 Ends
 - (1) 6' W x 6' H Roll Up Door
 - Gable End
 - Wood Floor
(3/4" pressure treated plywood)

Mini Storage with Porch		
(Includes 4' in length railing)		
*Porch does not add to length of structure		
Size	A-Frame Horizontal	A-Frame Vertical
	All Horizontal	All Vertical
10' W x 12' L x 7' H	\$4,530	\$5,325
10' W x 16' L x 7' H	\$4,980	\$5,920
12' W x 12' L x 7' H	\$5,360	\$6,295
12' W x 16' L x 7' H	\$5,870	\$6,805

Option List						
Walk-In Door		Anchors			Window	
Size	Price	Mobile Home Price	Asphalt Price	Concrete Price	(Single pane)	
36" W x 72" H	Ask your Sales Rep	Ask your Sales Rep	Ask your Sales Rep	Free	Size	Price
36" W x 80" H	Ask your Sales Rep	Ask your Sales Rep	Ask your Sales Rep	Free	30" W x 30" H	Ask your Sales Rep



www.americansteelinc.com | (866) 730-9865
 Prices are subject to change without notice

Pricing for AR, AZ, CO, IA, IL, IN, KY, LA, MA, MD, MI, MN, MO, NM, NJ, NY, OH, OK, PA, TX, UT, VA, WI, WV - Rev. 12/20